

Google Workspace (G Suite) to Microsoft 365 Migration With BEMO

Save time and headache with a seamless, white-glove migration of emails, files, contacts, and calendar items from Google Workspace to M365

Why Should You Do Your Migration With BEMO?



Peace of mind it's done *right*



No data-loss



Get licensing bundled



Full hands-off experience



Minimal downtime



Post-migration support



- Personal files
- Folders
- Hierarchy
- Group permissions



- Shared files
- Folders
- Hierarchy
- Group permissions



- Emails
- Contacts
- Calendar items
- Folders
- Shared mailboxes
- Email aliases
- Multiple domains
- Distribution lists

"BEMO has made our transition to Office 365 easy and continues to support us as we're constantly growing and adding more services. We're very satisfied with their support and how much time they've saved us on our technical needs."

Chris. K



TrustScore 4.8 | Excellent

"BEMO did a great job switching our email over to O365... We are not IT people and they were still able to make a successful transition."

Highly recommend."

Chandler. M

Who Are We?

BEMO is a Seattle-based Microsoft US Partner of the Year Winner whose mission is to enable any small or medium-sized organization to securely conduct business in today's digital world. Our team is built of seasoned Microsoft Experts, including our Co-Founders who are long-time Microsoft alumni.

We look forward to assisting you on your Microsoft Cloud journey!

Speak to one of our experts

or email us: sales@bemopro.com



Verified SOC 2 Compliant Company



Microsoft US Partner of the Year Winner | 2023

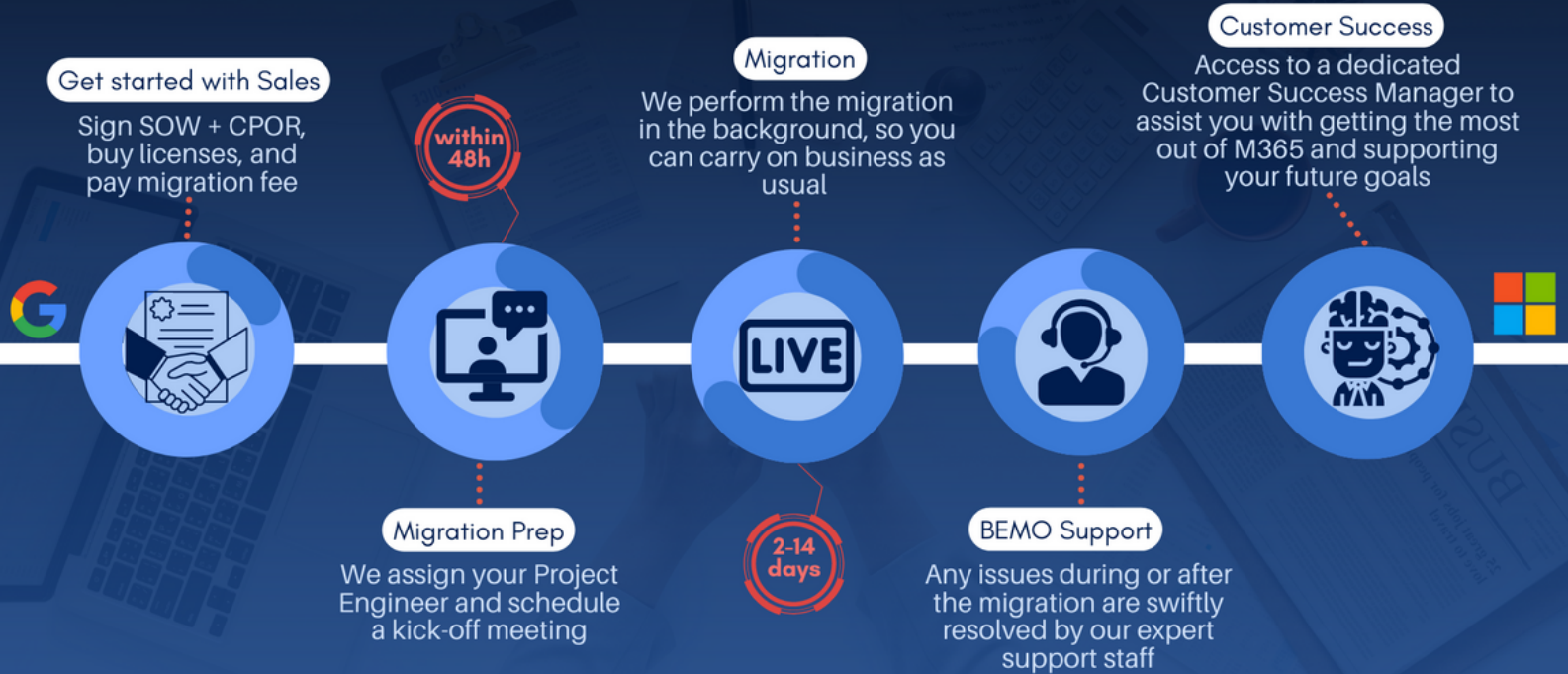
Social Impact, Community Response Finalist '22 & '23 | Modern Workplace for SMB



Microsoft Solutions Partner

Security
Modern Work
Azure Data & AI
Azure Infrastructure
Digital & App Innovation

Customer Migration Journey



Frequently Asked Questions

How long does a migration take? Migration time will depend on different factors such as: Number of mailboxes to migrate, average size of mailboxes to migrate, and total size of data to migrate to SharePoint or OneDrive. You can expect a range from 2 to 14 days depending on the project's size.

Do you delete our data from G Suite? The migration does not move the data, but rather copies it. Original data is not modified. We create a backup prior to migration just in case.

Are permissions migrated as part of the file migration? Permissions assigned to internal users are migrated as long as all the users keep the same username in the destination. External permissions might need to be reassigned to generate new links to the files.

Will there be any downtime during the email migration? Average downtime is 1 hour, but depending on your DNS provider, it could take up to 8 hours. We make the cut-over phase around 5-6PM so that your people aren't affected by this. **NOTE:** During this 'downtime', if someone were to email you, it will show up on the other side, so no data is lost. You simply can't access the email yet.

Is the licensing of the migration tool included in the BEMO Migration cost? Yes. You will not be charged separately.

What happens if a problem comes up? If anything isn't working perfectly, then we will meet with your people one-on-one. You won't be charged anything; this is included in what you are paying us.

"From start to finish, BEMO had a fantastic process that exceeded our expectations and helped us reach our goals. Every person we worked with at BEMO was professional, extremely knowledgeable, and accommodating. They have a customer-centric and results-oriented process which made the experience and results outstanding!"

- Brian A.



Speak with us here



 **BEMO**

www.bemopro.com